

A young man with dark hair is shown in profile, blowing a large, billowing cloud of white smoke or vapor. The smoke fills the upper half of the frame, contrasting sharply with the dark background. The man's face is partially visible, with his eyes closed and mouth open as he exhales. The overall mood is dramatic and artistic.

JAMIE MARKS IS DEAD

PRODUCTION DESIGN VISUAL REFERENCE LOOK BOOK

BY: AMY WILLIAMS



JAMIE MARKS IS DEAD



MOOD & TONE



MOVEMENT IN STILLNESS

Soft floating ephemeral relationships with atmospheric grace.





Color Palette & Artistic References



A woman with long dark hair, wearing a patterned top and dark skirt, is crouching on a paved surface next to a green car. She is looking down at the ground. In the background, a light blue car is parked on a street. The scene is set outdoors on a paved area with some grass and a curb.

CHARACTER SETS & LOCATIONS

ADAM'S HOUSE

ADAM'S BEDROOM

TOWN

SCHOOL

GRACIE

FUCK YOU FRANCES

BRIDGE & TUNNEL



ADAM'S HOUSE



ADAM'S BEDROOM I





ADAM'S
BEDROOM II



TOWN



SCHOOL

Entrance



Lockers



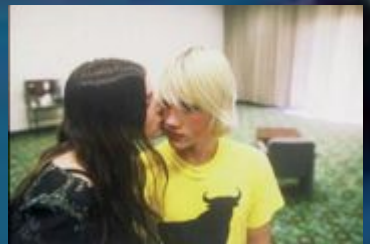
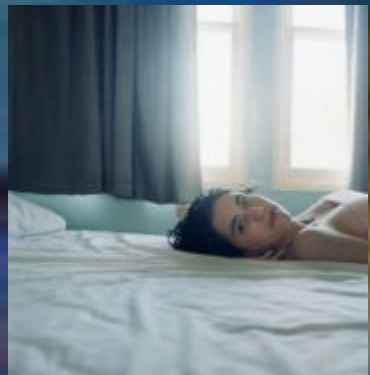
Classroom



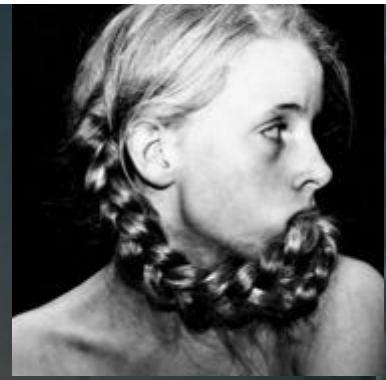
Stairwell



GRACIE



FUCK YOU FRANCES



BRIDGE & TUNNEL

